

What's on Display

In addition to listening to today's short presentations, we encourage you to walk around the room and review the exhibits that are positioned along the walls. As you do so, you are welcome to provide your comments to the study team representatives who are positioned near each exhibit. Your input is important to the project, so please share your thoughts, ideas, and concerns with us. We want to hear what you think.

Name of Presentation Board	Information Described on the Board
Welcome	Information about tonight's meeting.
Process and Schedule	Description of the planning process and timeframe for the Downtown Corridor AA.
Purpose and Need	Key elements of the Draft Downtown Corridor AA Purpose and Need Statement.
Modes of Transit	Description of the differences between two modes of transit: the modern streetcar and a bus with a dedicated travel lane.
Alternatives	Maps of the initial set of alignments for the Downtown Corridor spanning from the River Market to Union Station on the north, through the Central Business District and Crossroads areas to Union Station and Crown Center on the south.
Next Steps	Involves the assessment of alternatives, determination of a locally preferred alternative and development of a corresponding financial plan.
How to Be Informed and Stay Involved	Describes how to access additional project information and whom to contact.

Would you like more information?

Bookmark MARC's KC Smart Moves website, www.kcsmartmoves.org, and check back often to find project-related materials, announcements, and upcoming events!

You may also contact Triveece Harvey, AICP, at Patti Banks Associates to schedule a presentation for your stakeholder group. You can reach Triveece: by email at tharvey@pbassociates.com or by phone at 816-756-5690 ext. 3038



Open House #1

What's Happening

The city of Kansas City, Mo., Kansas City Area Transportation Authority (KCATA), Jackson County, and Mid-America Regional Council (MARC) welcome you to the **June 21, 2011, open house** for the Downtown Corridor Alternatives Analysis (AA)! Today's meeting will run from **4-6:30 p.m.**, during which we will discuss a possible starter transit line for downtown Kansas City. The Downtown Corridor AA will identify the locally preferred alternative for a downtown fixed-guideway transit solution, and a viable plan to fund the construction, operation and maintenance of the line as a first step toward implementation. The narrow, two-mile corridor will run from the River Market on the north, through the Central Business District and the Crossroads areas to Union Station and Crown Center on the south.

What You Can Do Today

At today's meeting you are encouraged to:

- **Listen to a short presentation** at 4:30 and/or 5:30 p.m. (Both are identical).
- **Review exhibits** that describe the overall planning process and schedule for the Downtown Corridor AA, the purpose and need for the AA, plus mode and alignment alternatives for the corridor.
- **Learn** about the differences between various types of transit, such as bus with a dedicated lane and streetcars.
- **Talk with staff** about what you see on display and hear during the presentation.
- **Fill out a comment card** before leaving that asks for your feedback on the Purpose and Need Statement for the Downtown Corridor AA and comments on the mode and alignment alternatives.



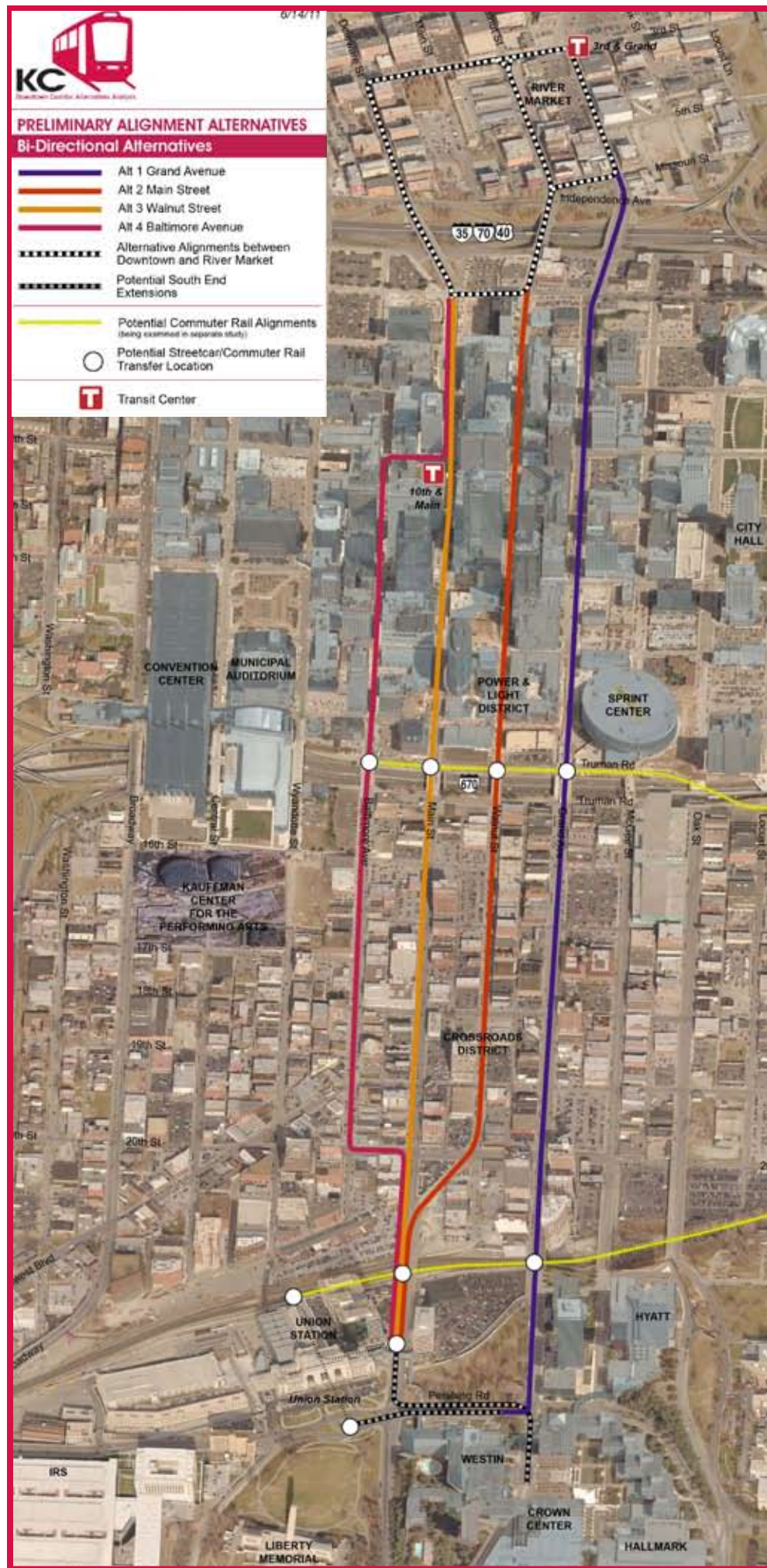
Example of modern streetcar



Meeting participants listen to a presentation



Meeting participants review exhibits



Preliminary Alignment Alternatives

The Purpose and Need for the Project

As described in the draft Purpose and Need Statement, the purpose of the Downtown Corridor AA is to provide an attractive transit option that will more conveniently connect people and places within the Downtown Corridor, and support regional and city efforts to develop downtown Kansas City and the Downtown Corridor as a more attractive and successful urban center. The project is needed to help the Downtown Corridor **connect, develop, thrive, and sustain**.

What's Next

The Partnership Team and consultants will begin assessing the multiple alternatives on display today against a number of factors, including community concerns, potential ridership, right-of-way issues, economic development potential, operating and construction costs, plus traffic, land-use, environmental, and historic impacts. The assessment will result in a smaller number of alternatives that will be presented at the second open house in September. Ultimately, one LPA for a transit connection between River Market and Union Station/Crown Center will be selected with a corresponding plan to fund it. The LPA is Federal Transit Administration requirement and is necessary in order to obtain funding for the starter line.



The new starter line will connect downtown activity centers such as the River Market.

